

Labcoat™ Benchtop Tablet Coating Systems

Labcoat™ BT is a compact, self-contained laboratory coating system.

O'HARA
TECHNOLOGIES

> Features

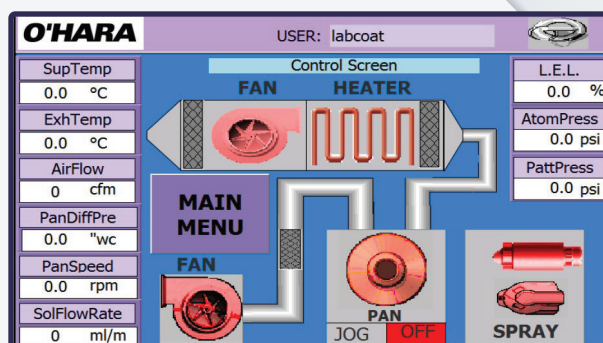
- Compact, self-contained, bench-top design
- Interchangeable pan sizes
- 316L stainless steel, polished mirror finish (0.4 µm RA) product contact
- Schlick™ Nano ABC (anti-bearding cap) spray nozzle
- Built-in Watson Marlow™ peristaltic pump
- Siemens™ colour touchscreen HMI & PLC control
- On-board supply fan, electric heater & exhaust fan
- Integrated high efficiency exhaust filter
- Emergency stop
- Solvent capability optional
- Solution flow measurement via loss-in-weight scale optional

> Benefits

- Easily installed and relocated – “plug-and-play” system
- Designed to handle small R&D batches (240 to 460 g)
- User-friendly control system
- Hinged, clear acrylic process cover allows user to observe coating process
- Easy coating scale-up



Our affordable and easy-to-operate Labcoat™ Benchtop tablet coating system is the perfect tool for research & development laboratories, start-up companies and training centers.



Our control screen allows users to easily monitor and manipulate critical process variables such as air flow, temperature and pan speed. Alarms will be displayed on this screen when process variables are outside control ranges, or when a device is not functioning correctly.



Shown on the left is our acrylic process cover which allows users to watch as the pan rotates, the ABC Nano nozzle sprays, and ultimately, their product being coated.

960-017-0418

visit: www.oharatech.com

O'Hara Technologies Inc.

Tel: +1 (905) 707 3286

Email: sales@oharatech.com

20 Kinnear Court Richmond Hill, Ontario Canada, L4B 1K8



Labcoat™ Benchtop Tablet Coating Specifications

General Specifications

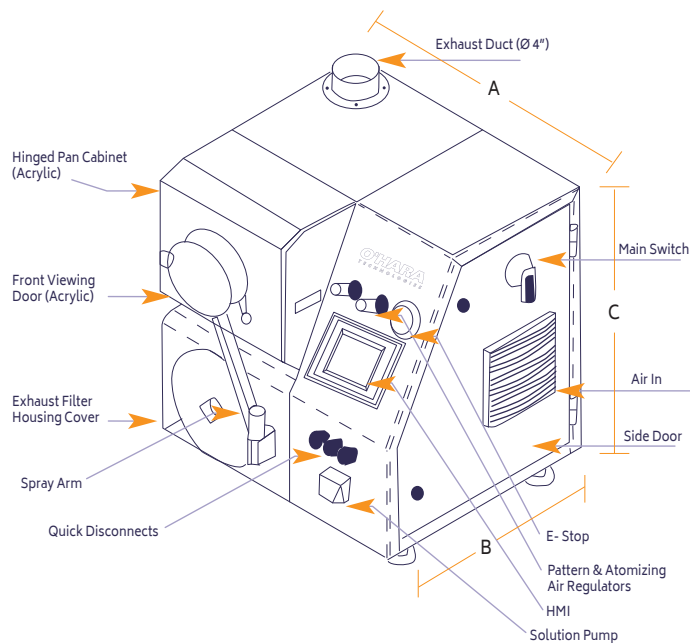
Drum Sizes	215mm (8.5") Narrow	215mm (8.5") Standard
Brimful Volume	0.51 L	0.67 L
Working Capacity ¹	0.24 - 0.35 kg	0.32 - 0.46 kg
Supply Air Volume	85 to 185 m ³ /h (50 to 110 CFM)	

Dimensions and Weight

	Aqueous	Solvent
Width (A)	27.5" (699 mm)	
Depth (B)	26.3" (668 mm)	
Height (C)	27 3/4" (705 mm)	34" (865 mm)
Weight	125 kg (275 lbs)	150 kg (330 lbs)

Utilities

	Aqueous	Solvent
Electrical Power	220 - 240 v, 1 Ph, 50 - 60 Hz	
Compressed Air	25 Nm ³ /h at 6 bar (15 SCFM @ 90 PSI)	28 Nm ³ /h at 6 bar (16 SCFM @ 90 PSI)



Our Schlick ABC Nano spray nozzle is pictured above. This nozzle has a spray rate of 1-10 g/min. All nozzle caps, inserts and needles are 316L stainless steel construction.

Specifically designed for our Benchtop coater, our stainless-steel workbench is pictured above. Mounted on casters with brakes, this unit can be easily relocated. Beneath the coater is plenty of space to store and conceal various coating accessories such as pans, plenums and solution preparation equipment.

¹Working capacity is 60-85% of brimful volume, calculated based on a product bulk density of 0.8 kg/L
Specifications are subject to change without notification

960-017-0418

visit: www.oharatech.com

O'Hara Technologies Inc.

Tel: +1 (905) 707 3286

Email: sales@oharatech.com

20 Kinnear Court Richmond Hill, Ontario Canada, L4B 1K8

