

Fastcoat™ Continuous Tablet Coating Systems

Our patented Fastcoat™ Continuous technology allows users to significantly improve productivity through coating a wide range of capacities continuously.

► Features

- True continuous or batch style of production
- Perforated pan, 316L stainless steel with polished mirror finish (0.4 µm RA)
- Zero Waste start-up and shut down system
- Automated bed-tilting for tablet bed-depth control
- O'Hara Professional Coating Arm with ABC (anti-bearding cap) spray nozzles
- Built-in peristaltic pumps with mass flow meters and recirculation valves
- Remote air handling unit with preheat, humidity control and HEPA filtration
- Remote exhaust fan and dust collection system
- 21 CFR Part 11 compliant Allen Bradley™ PLC control
- Wash-in-place system
- Remote, distributed I/O for ease of installation
- Solvent capability optional
- Material handling equipment available – conveyors, diverters, cooling/polishing tunnels, weigh feeders

► Benefits

- Capital and operational cost savings when compared to batch coating
- Most efficient method of coating, rapid and adjustable throughputs
- Higher quality product output, reduction in product damage
- Less GMP space required when compared to multiple batch coaters
- Quickly transition from pilot to production using a single system



The nature of continuous coating requires a shallower bed depth, which leads to less product damage, and allows tablets to pass under the anti-bearding spray nozzles at a higher frequency. As a result, our customers see markedly improved coating uniformity, often at significantly lower weight gains than traditional batch coating.



Continuous coaters significantly shorten production cycle times and improve productivity, while using less GMP floor space and utilities than traditional batch coaters.

The Fastcoat™ Continuous 75 tablet coating system, is our smallest continuous coater with a throughput range of 50 to 100 kg/h. This allows your pilot, scale up and production processes to occur in one machine now that your batch size is determined by time, instead of physical pan size.

960-012-0418

visit: www.oharatech.com

O'Hara Technologies Inc.

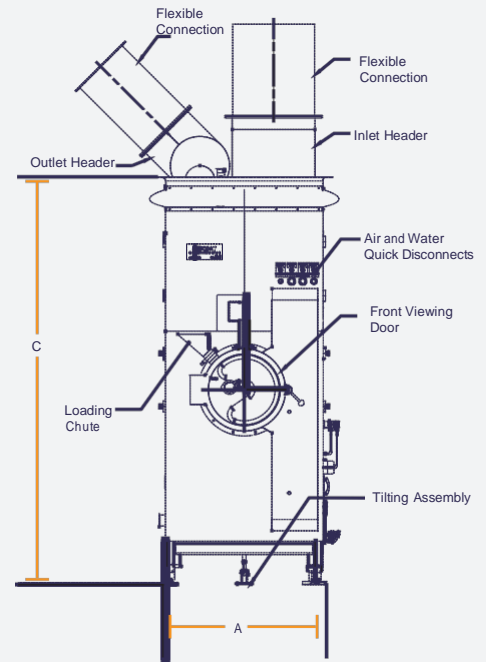
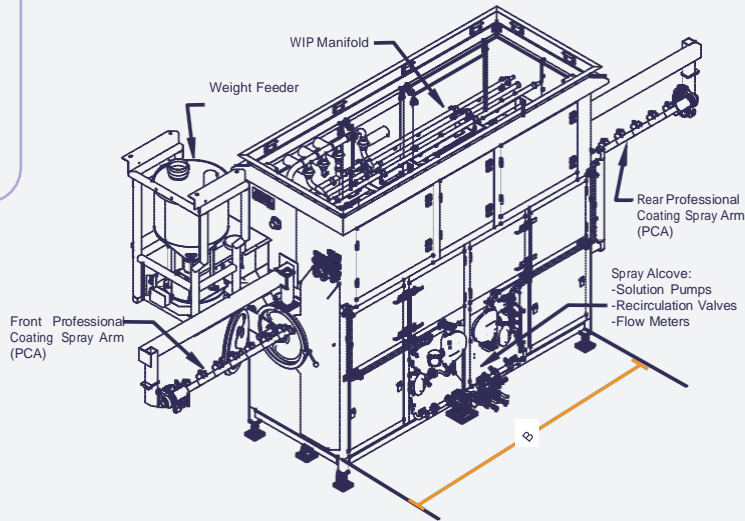
Tel: +1 (905) 707 3286

Email: sales@oharatech.com

20 Kinnear Court Richmond Hill, Ontario Canada, L4B 1K8

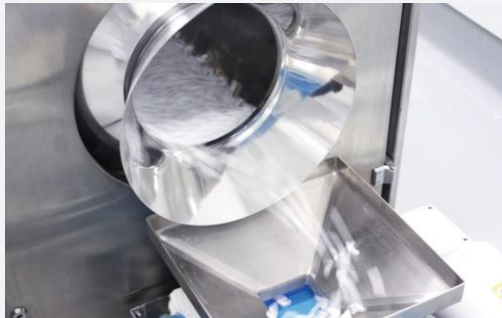


Fastcoat™ Continuous Tablet Coating Specifications



General Specifications

	FC C75	FC C500	FC C1200
Throughput Rate*	50 to 100 kg/h	250 to 500 kg/h	600 to 1200 kg/h
Supply Air Volume	2000 CFM 3400 m ³ /h	8000 CFM 13600 m ³ /h	12000 CFM 20400 m ³ /h



O'Hara offers various material handling equipment on both the inlet and outlet of the coater. The cooling/polishing tunnel has the capability to wax coat the tablets in a continuous manner.



The anti-bearding nozzles are mounted on a titanium Professional Coating Arm (PCA) are dispersed evenly along the length of the coating pan. The "Zero Waste" coating system allows all tablets, from the first to the last, to be coated uniformly.

Machine Dimensions

	FC C75	FC C500	FC C1200
Width (A)	36 1/8" (918 mm)	42 3/4" (1086 mm)	56 1/8" (1364 mm)
Depth (B)	72 1/2" (1832 mm)	112 1/4" (2851 mm)	223 3/8" (4374 mm)
Height (C)	109 1/16" (2777 mm)	116" (2953 mm)	105 3/4" (3220 mm)

*Calculated based on a product bulk density of 0.8 kg/L, and 3% weight gain using 20% solids in solution. Specifications are subject to change without notification.

960-012-0418

visit: www.oharatech.com

O'Hara Technologies Inc.

Tel: +1 (905) 707 3286

Email: sales@oharatech.com

20 Kinnear Court Richmond Hill, Ontario Canada, L4B 1K8

